



RWS GALLERY
VENUE HIRE

ABOUT THE GALLERY

Located moments from Trafalgar Square, the RWS Gallery is a contemporary cultural venue in the heart of central London.

Designed by WilkinsonEyre, the gallery pairs a modern architectural interior with a listed historic façade, creating a distinctive setting for corporate, cultural and brand-led events.

As the home of the Royal Watercolour Society – one of the UK's longest-established artistic institutions – the space offers a rare combination of creative credibility and commercial flexibility. Accommodating up to 150 guests across two floors, the gallery is suited to both intimate gatherings and larger receptions.

While the gallery presents a year-round exhibition programme, it is also available for exclusive hire and can be experienced either within a current exhibition setting or as a clear, contemporary gallery environment – offering a curated cultural backdrop or a refined blank canvas.

The venue is particularly suited to:

- Corporate receptions and client entertaining
- Press launches and influencer events
- Brand activations and experiential marketing
- Private views and exhibition showcases
- Talks, panel discussions and presentations
- Creative workshops and artist-led experiences
- Executive retreats and team-building sessions

As a registered charity, income generated through venue hire directly supports the Royal Watercolour Society's artistic programme, exhibitions and education initiatives – allowing events held within the gallery to contribute directly to the continuation of contemporary art practice in the UK.







GROUND FLOOR GALLERY

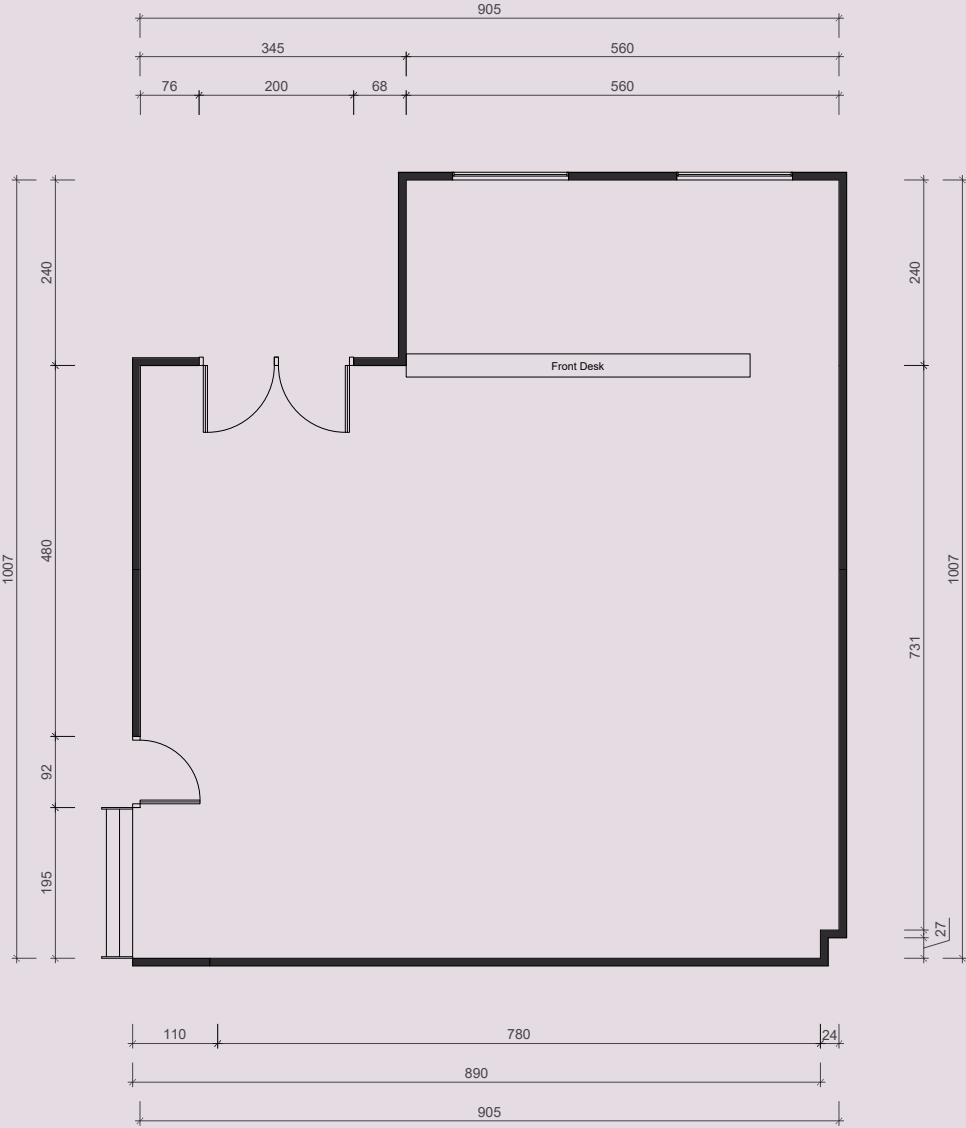
The Ground Floor Gallery is a bright, contemporary space with direct street-level access in the heart of central London. Designed by WilkinsonEyre, it combines a clean white interior with museum-quality lighting and clear, adaptable floor space.

A sculptural silestone reception desk sits to the side of the main entrance, creating a natural welcome point for guest registration or event branding, while open sightlines allow the room to be configured with ease.

CAPACITY
50 Standing

DIMENSIONS
Total floor area approximately 70 square metres

GROUND FLOOR GALLERY



Floorplan shown is indicative and subject to minor final refinements.



Photography: Brandon Few



LOWER GROUND FLOOR GALLERY

The Lower Ground Floor Gallery comprises two vaulted interconnecting spaces with floating walls, offering an adaptable and atmospheric environment for events and exhibitions.

Museum quality lighting highlights both architectural detail and art, while the flexible layout allows for a wide range of event configurations.

CAPACITY

100 Standing

DIMENSIONS

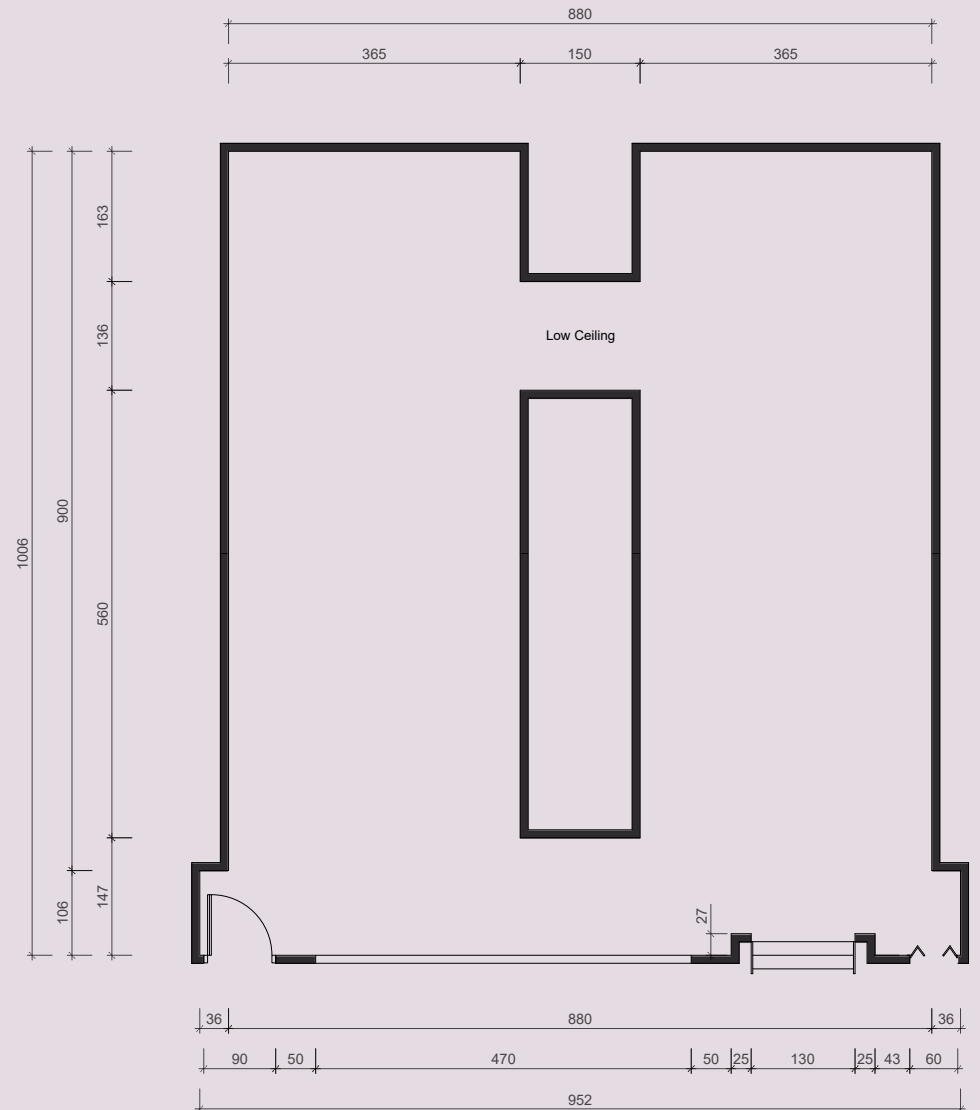
Total floor area approximately 75 square metres





Photography: Mark Sepple

LOWER GROUND FLOOR GALLERY



Floorplan shown is indicative and subject to minor final refinements.

MIND YOUR HEAD



FURTHER INFORMATION

SUPPLIERS & CATERERS

Clients are welcome to nominate their own catering and production suppliers, subject to compliance requirements. We are also happy to make recommendations where possible.

FACILITIES

Two self contained, gender neutral toilets including one accessible
Air conditioning throughout
Lift serving both floors of the gallery
High speed WiFi

PRICING

Evening event hire from £3000
Daytime event hire from £2000
Prices are exclusive of any applicable VAT
All hires include use of both gallery spaces

PAYMENT

To confirm a booking, a holding deposit of 50% of the total hire fee is payable by the hirer to the RWS Gallery. The balance and a refundable security deposit fall due 60 days before the event.

MAKE AN ENQUIRY

To enquire about hiring the RWS Gallery please email venuehire@rwsgallery.co.uk

RWS GALLERY

3 - 5 Whitcomb Street
London WC2H 7HA

020 8050 9425

royalwatercoloursociety.com



